



A project of the Eden Mills Millpond Conservation Association Inc.



## What happened on the Eighth Annual Earth Day 2015 In Eden Mills? (**ALERT!** Read about Richard Lay presentation on page 5!)

### ❖ BIRD WATCHING HIKE

Guided by Eden Mills' own expert, Brian Husband, eight early-bird birders sighted (or heard) 31 species this year, 3 more than last year! Every year is a little different. The species marked in green were not seen last year.

- American Crow
- American Goldfinch
- American Robin
- Barn Swallow
- Belted Kingfisher
- Black-capped Chickadee
- Blue Jay
- Broad-winged Hawk
- Brown-headed Cowbird
- Canada Goose
- Cedar Waxwing
- Chipping Sparrow
- Common Grackle
- Dark-eyed Junco
- Downy Woodpecker
- Eastern Phoebe
- European Starling
- Mallard Duck
- Mourning Dove
- Northern Cardinal
- Northern Flicker

- Pileated Woodpecker
- Red-bellied Woodpecker
- Red-tailed Hawk



- Red-Wing Blackbird
- Ruby-crowned Kinglet
- Ruffed Grouse (auditory)
- Song Sparrow
- Swamp Sparrow
- Tree Swallow
- Wood Duck

Thank you Brian!!

...page 2



**A project of the Eden Mills Millpond Conservation Association Inc.**

### ❖ **TREE PLANTING**

We distributed 950 trees from Wellington Green Legacy we had lined up in Joe and Barb's driveway. Among the species planted was the non-native Norway Spruce which adapts well to climate change and is now listed among Canadian species with a qualifier.

In Barb Marshall's photo you see Kit Bresnahan and Bill Allen with tree planters Jack and Charlie Mceachern.



Thank you to:

Bill Allen for coordinating the tree orders

Joe and Barb for watching over the future forest

All who participated and planted

Wellington Green Legacy

### ❖ **CAPTURE THE FLAG**

Jack Darmon rallied the children in the Park in the afternoon for games. Two teams of five gathered in the wooded areas on both sides of the soccer field to launch into capturing the flag. A perfect spring afternoon!

Thank you Jack!

### ❖ **WILD FLOWER HIKE**

Brian Husband once again led a merry crew to look for spring wild flowers – They were not disappointed and identified 21 flowers/plants – Who would have imagined so many flowers so early in this very cool spring? Norah Menzies kept the log and captured both rowdy and serene moments on her camera:



- 1/ Trout Lily=Dogtooth Violet= Adder's Tongue
- 2/ Blue Cohosh...with its poisonous blue berries
- 3/ Sedge.....looks like a clump of tall grass
- 4/ Plantain Sedge....way thicker leaves...also tiny, tiny flowers
- 5/ Trillium....often in clumps so will attract bees to pollinate
- 6/ Meadow Rue...pendulous flowers because it is wind-pollinated
- 7/ False Strawberries...not edible....leaves similar but yellow flower
- 8/ Wintergreen...stays green all winter and early spring...replaced in summer
- 9/ Leatherwood shrub...can tie small branches like a piece of leather, wind-pollinated with hanging yellow bud
- 10/ Wild Leek -- edible leaves and bulb
- 11/ Bloodroot-white flowers
- 12/ Violets - deep, deep purple- my favourite!
- 13/ Wild Woodland Strawberries...edible and very sweet, "parent "of our West Coast cultivated strawberry
- 14/ Dame's Rocket
- 15/ and 16/ Toothwort --2 species!
- 17/ Garlic Mustard...invasive!
- 18/ May Apple--big green leaves and hanging white flower
- 19/ Arrowhead—arrowhead-shaped leaves and white flowers...growing IN Blue Springs Creek
- 20/ Marsh Marigold
- 21/ Colt's foot--yellow flower in ditch by road

Again, thank you to Brian Husband for sharing the magic! He tells us he thoroughly enjoyed the day!





A project of the Eden Mills Millpond Conservation Association Inc.

## ❖ POTLUCK SUPPER AND MUSIC

For the first time, we extended Earth Day into the evening – We had a good crowd and a great variety of tasty dishes from village kitchens. This was followed by music, rip-roaring and soulful by turns, and even some dancing, featuring:

Rockwood's Wendi and Hugh Hunter with Blue Yonder group; and from Eden Mills - Robin Aggus on bagpipes, with one special piece on English bagpipes accompanied by Marilyn Baxter on accordion; and Corey Melnick who played guitar and sang for us.



Kit Bresnahan was our MC – and he shared many insights with us, including this memorable quote from Margaret Mead: "We are at a point in time where we must educate our children in what no one knew yesterday, and prepare our schools for what no one knows yet, but what some must know tomorrow"

This happy event was organized by Anita Beaudette with huge assistance from Kit Bresnahan, Andrea Archer, Luc, Manon and Samuel Bourgeois, John Crompton, Linda Hendry, Sue Gillespie and Anna and Charles Simon. After the festivities, the Hall was cleaned up in a jiffy with the help of those attending. It seemed to take no time at all!

There are definitely many others to thank for participating in every aspect of Earth Day 2015 – Special thanks to all who helped with the village clean-up and planted trees.

Let's do it again next year! Pick up your instruments and start practicing now!

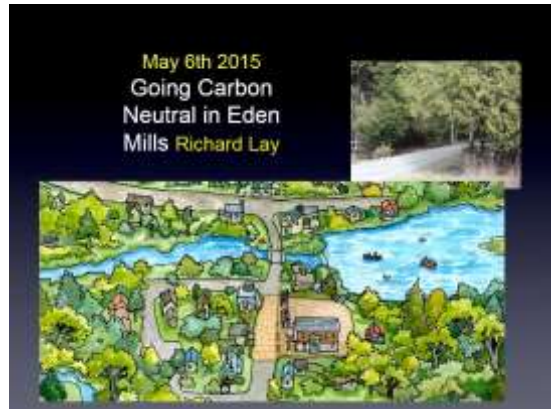


...page 5





**A project of the Eden Mills Millpond Conservation Association Inc.**



## **Third Age Learning Series/Guelph/Spring Series**

presents

### **Richard Lay, Eden Mills Going Carbon Neutral**

Our friend and neighbour, Richard Lay, has been invited to make a presentation on Eden Mills Going Carbon Neutral in the Third Age Learning Series. **All are welcome.**

**Wednesday, May 6**

**1:30 pm**

**Guelph Public Library Program Room**

**100 Norfolk Street**

#### ***Going Carbon Neutral in Eden Mills***

Richard Lay, civil engineer and Eden Mills resident

Through the energy we use, we all contribute to the release of CO<sub>2</sub> into the atmosphere. This is the inspiring story of how residents of Eden Mills have created a program to balance this load by accurately measuring and reducing their CO<sub>2</sub> footprint and by capturing CO<sub>2</sub> and returning it whence it came...to be the first town in Ontario to become “carbon neutral.”

The spring series also includes the following talks:

**May 27 “Cry the Tame Waters . . . following the engineered flow from Lake Erie to Lake Ontario”**

Dr. William (Bill) James, Engineering Prof. Emeritus, University of Guelph

**June 10th “Life in India” interpreted through Hindu Stories and Legends**

Janey Southey, Guelph University, sociologist

**June 24 (tentative) “History of the Erie Canal, America’s first freeway”**

**[www.goingcarbonneutral.ca](http://www.goingcarbonneutral.ca)**

## EARTH DAY 2015 ADDENDUM

Just in - one last fabulous photo from Earth Day with photo credit to Janet Wilson.

Early morning birders (Brian Husband, wise leader, Lee Laing and James Reinhart) joyously spotting the Ruby-crowned Kinglet!!

